

# KPM-200

## Fiber Connector Microscope



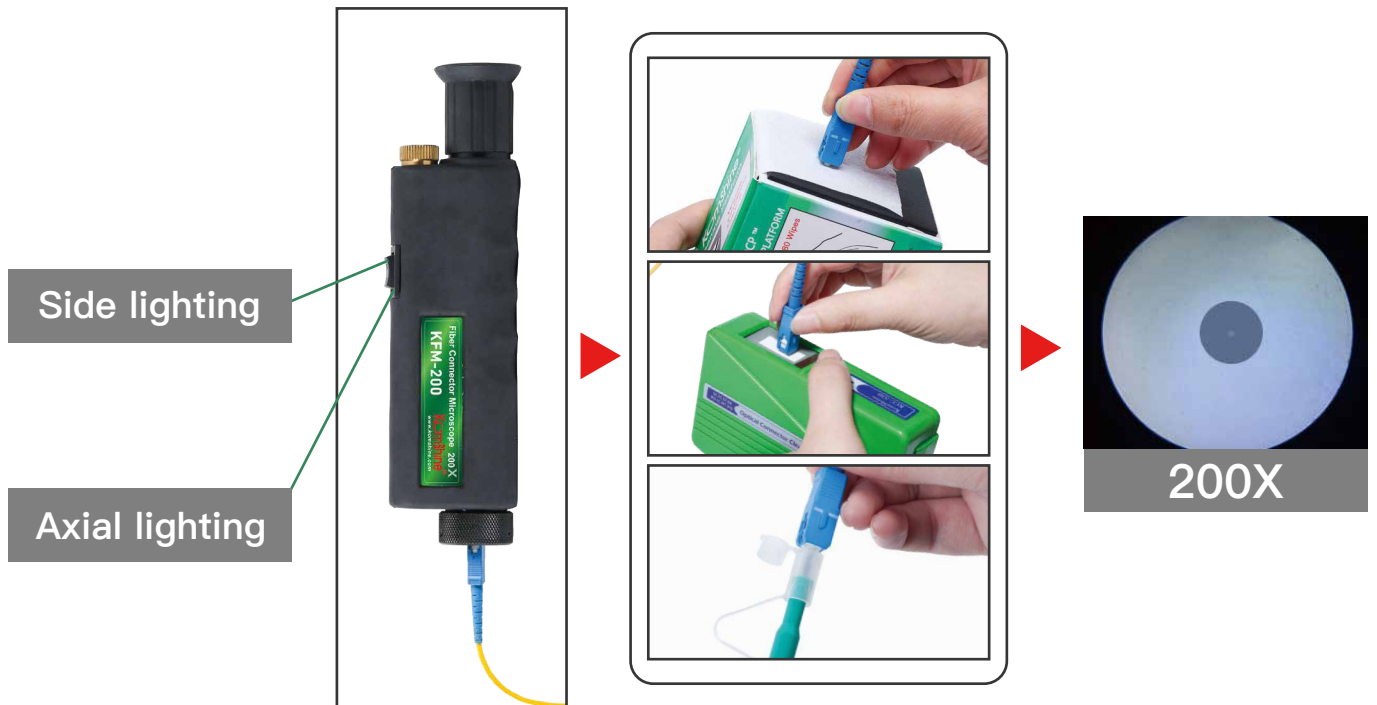
### Product characteristics

- The amplification rates of 200 and 400 times are switched to each other.
- Imported coated lens, stain clearly visible.
- White LED, rated for 100,000 hours; 40 hour battery life
- Grinded silica gel shell, anti-skid, anti-fall and anti-shock.
- Supporting SC/FC/ST/LC
- 1.25 mm & 2.5mm adapter
- Small size, one-handed, convenient and fast.

**Supporting SC/FC/ST/LC**



USE EFFECT:



PRODUCT SPECIFICATION:

Magnification	200x & 400x
Light Source	White LED, rated for 100,000 hours; 40 hour battery life
Size	225mm x 60mm x 42mm
Adapter Interface	1.25 mm & 2.5mm universal adapter included
Interface type	SC, FC, ST and LC
Includes	host machine 1.25 mm & 2.5mm adapter Nylon black bag LR44 button battery (Purchased separately) Packing box

## PRODUCT LIST:



## HEAD OFFICE

KomShine Technologies Limited

## CONTACT US

Add: 2F Bldg. D Qinheng Tech. Pk. Nanjing, JS, 210001, China

TEL: +86 ( 025 ) 66047688

[www.KomShine.com](http://www.KomShine.com)

[ventas@komshine.com](mailto:ventas@komshine.com)

- \* Komshine reserves the right to improve, enhance, or modify the features and specifications of KomShine products without prior notification.
- \* Company and product names appearing in this catalogue are registered marks or trademarks of respective companies.
- \* This catalogue is printed using environmentally friendly paper and ink.